

The Barnes Foundation
2025 Benjamin Franklin Parkway, Philadelphia, PA 19130

Tech Report I, Part I

Lighting Proposal Memo

Joseph Brenner
Richard Mistrick
9/8/2014



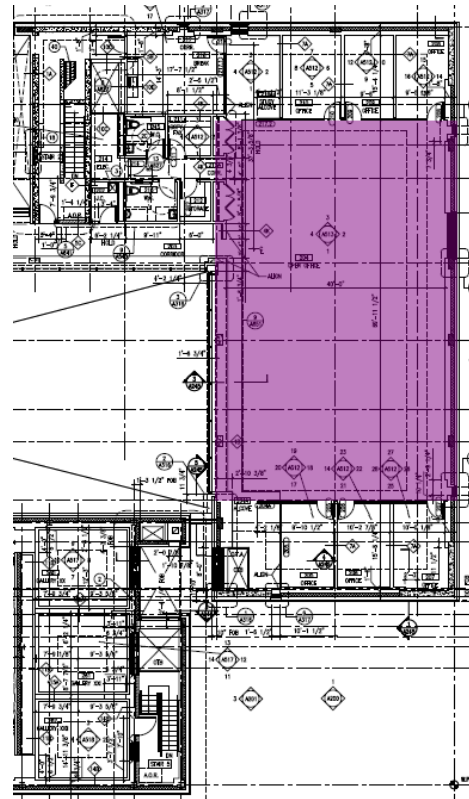
Open Office

Located on the top floor of the museum, this large open office area provides the majority of the space for the employees of The Barnes. With approximately 3100 square feet of space there is opportunity to create a lighting design that will emphasize the cohesiveness of the office while providing ample ambient light for the workers. Furthermore, there is a minimal amount of daylight entering the working area which will be analyzed and increased through the addition of windows and skylights whose design will respect the architecture of The Barnes.

Approx. Area		3100 ft ²
Length		43 ft
Width		70 ft

Materials

Floor		Carpet, Wood
Wall		Tempered Glass, Concrete, GWB
Ceiling		ACT, GWB, Concrete



Level 2



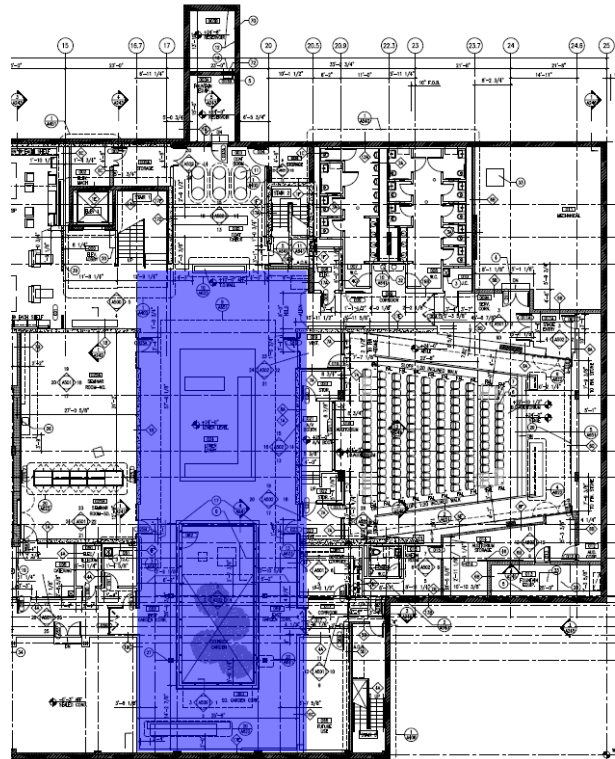
Lower Lobby

Leading up to the auditorium, the lower lobby acts as both a lobby and entertainment space. The lighting schemes in this area will be designed to create both public and private settings; this will allow for the space to appeal to normal everyday use and special reception events. This area also gives a great opportunity to study these psychological aspects on exterior spaces.

Approx. Area		4300 ft ²
Length		36 ft
Width		108 ft

Materials

Floor		Grey Limestone, Wood
Wall		Concrete, Wood
Ceiling		Concrete, GWB



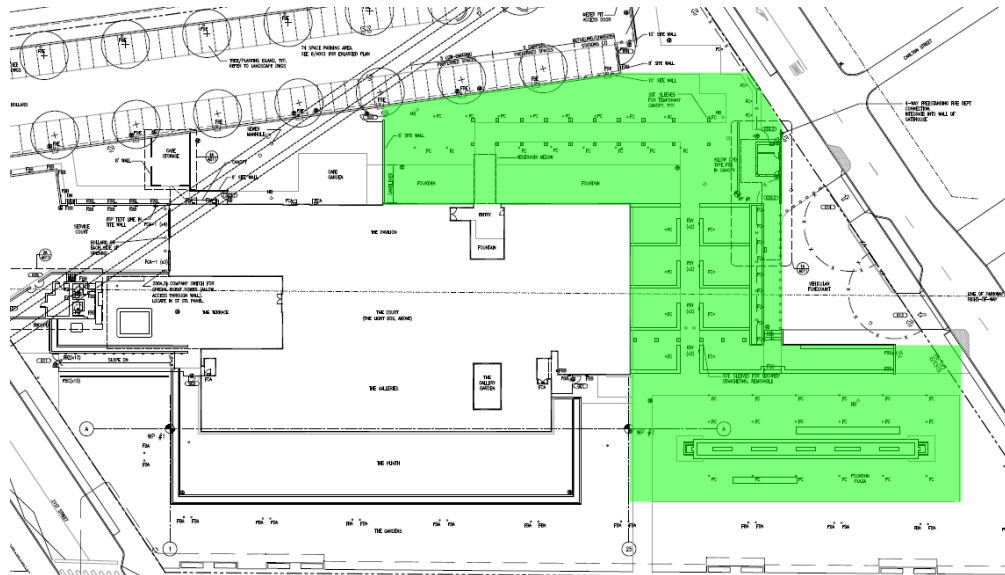
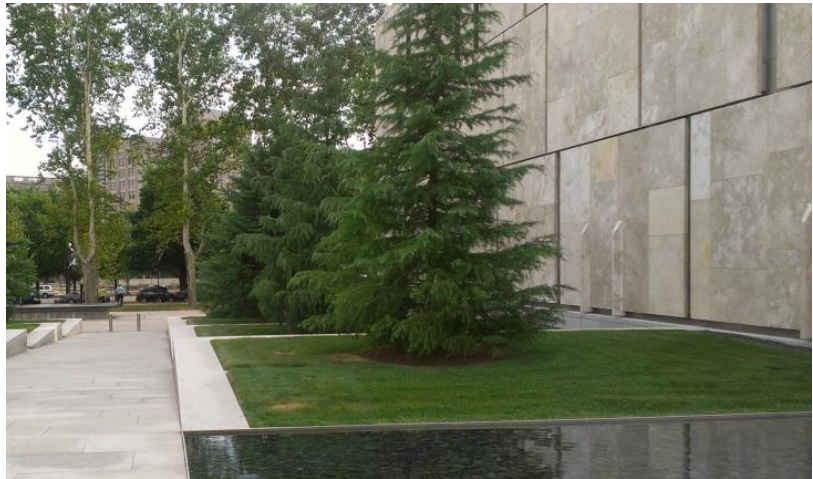
Lower Level



Public Garden

The concept when designing The Barnes was “a gallery in a garden and a garden in a gallery”. The public garden includes a large amount of green space and multiple water features. This will allow me to study exterior and submerged fixtures.

Approx. Area | 46,500 ft²



Exterior

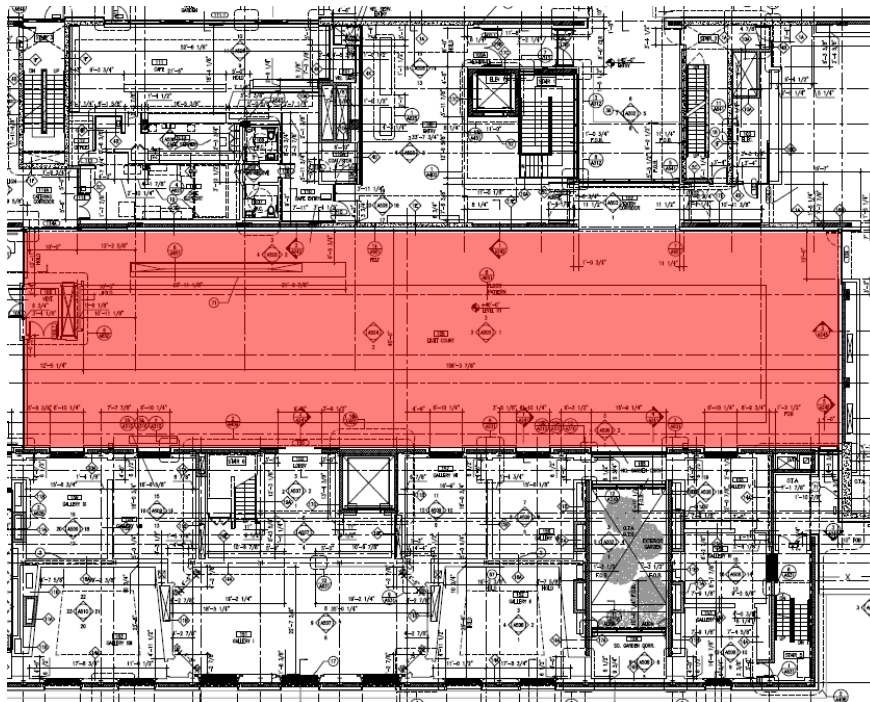
Light Court

The light court acts as the main lobby to the entire museum while also being used for entertainment events throughout the year. While this is much like the lower lobby, this grand space is used for much more lively events such as dancing or award events. This requires more dynamic lighting including the possibility of using RGB LEDs. Three different concepts will be created for this space that each highlight varying aspects of the architecture while representing the energy of the court.

Approx. Area		8000 ft ²
Length		170 ft
Width		45 ft

Materials

Floor		Grey Limestone, Wood
Wall		Grey-Gold Limestone, GWB, Glass
Ceiling		Acoustic Plaster



Level 1